

Component Replacement

- electrical -



Xperia™ T3, Xperia™ Style
D5102, D5103, D5106, M50w

CONTENTS

1 Replaceable Components 3

2 Component Placing..... 5

3 Additional Repair info 6

4 Revision History 10

For general information about electrical repair related issues, refer to 1220-1336: Generic Repair Manual - electrical

Test after electrical replacement: refer to 1273-1772 Mechanical Test Instruction

Do not remove shield can lids (Heat pasta are added and RF performance will be damaged)

1 Replaceable Components

EXPLANATION OF ABBREVIATIONS USED IN THE COLUMN 'COMMENTS' BELOW

COMPONENT LOCATION

P = Primary side

S = Secondary side

REPAIR METHOD

HA = Hot Air (removal & mounting)

ST = Soldering Tool (removal & mounting)

HA/ST = Hot Air for removal - Soldering Tool for mounting

BGA = BGA Station

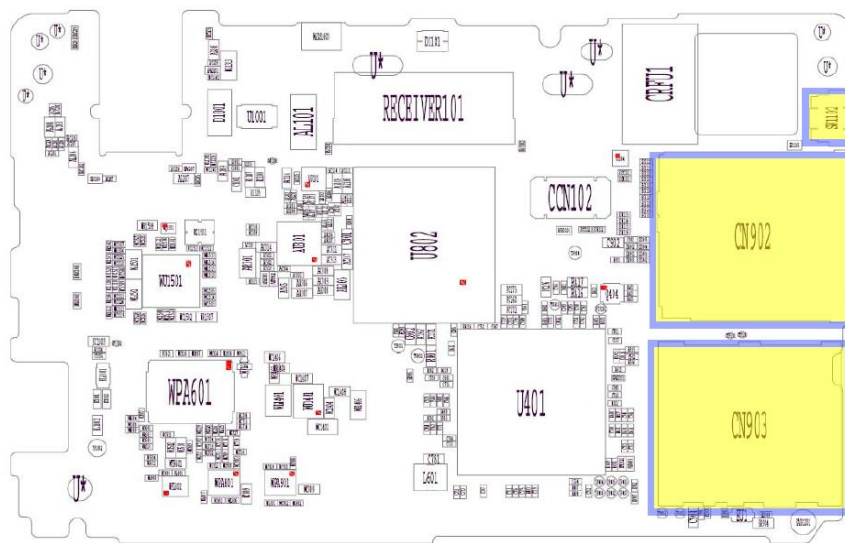
BH = Bottom Heater

ADDITIONAL INFORMATION

⇒1 (2,3,4, etc.) = Proceed to 'Additional Repair Info' for further instructions in the indicated section(s).

Position	Component for D5103 and D5106	Part no.	Comments
ACN202	Audio Jack Connector,PA 10 Glass Filled	F/620K00L0005	S HA+BH ⇒1
ACN203	HOLDER AUDIO JACK,9.45mm*10.75mm*2.4mm	F/440GUL21Z0A	S HA+BH ⇒1
CD101	LED LAMP,White,500mA,	F/600CBLPM17X	S HA+BH ⇒2
CN902	SIM Card Connector	F/63012308006	P HA+BH or BGA ⇒3
CN903	Connector MircoSD Flash Memory Card	F/620K0018008	P HA+BH or BGA ⇒4
CN1001	Micro USB holder	F/440GUL4020A	S HA+BH ⇒5
CN1002	CONNECTOR USB-Black	F/620B0019005	S HA+BH or BGA ⇒5
MIC102	Microphone,300ohm,115dB.	F/750041054TZ	S HA+BH or BGA ⇒6
PCON201	Battery Connector	F/620G00E5004	S HA+BH ⇒7
SW1102	Switch Connector,LS12K2H-T,Push	F/6304A020002	P HA+BH ⇒8
WABS1601	Antenna spring,3.2mm*1mm*0.95mm	F/440GUL35Z0A	S HA+BH ⇒9
WABS1602	Antenna spring,3.2mm*1mm*0.95mm	F/440GUL35Z0A	S HA+BH ⇒9
WADS1601	Antenna spring,3.2mm*1mm*0.95mm	F/440GUL35Z0A	S HA+BH ⇒10
WADS1602	Antenna spring,3.2mm*1mm*0.95mm	F/440GUL35Z0A	S HA+BH ⇒10
WAGS1601	Antenna spring,3.2mm*1mm*0.95mm	F/440GUL35Z0A	S HA+BH ⇒11
WANS1601	Antenna Spring 3.90mm*1.10mm*1.45mm	F/440SF50130A	S HA+BH ⇒12
WANS1602	Antenna Spring 3.90mm*1.10mm*1.45mm	F/440SF50130A	S HA+BH ⇒12
WCN501	RF Connector, 11GHz,4,SMD,0.5dB,-13.79dB.,50Ohm	F/620F00B0004	S HA+BH ⇒13
WCN502	RF Connector, 6GHz,1,SMD,999.99dB	F/620F009J001	S HA+BH ⇒14
WCN1101	RF Connector, 11GHz,4,SMD,0.5dB,-13.79dB.,50Ohm	F/620F00B0004	S HA+BH ⇒15
WCN1301	RF Connector, 11GHz,4,SMD,0.5dB,-13.79dB.,50Ohm	F/620F00B0004	S HA+BH ⇒16

Position	Component for 5102 and M50w	Part no.	Comments
ACN202	Audio Jack Connector,PA 10 Glass Filled	F/620K00L0005	S HA+BH ⇒1
ACN203	HOLDER AUDIO JACK,9.45mm*10.75mm*2.4mm	F/440GUL21Z0A	S HA+BH ⇒1
CD101	LED LAMP,White,500mA,	F/600CBLPM17X	S HA+BH ⇒2
CN902	SIM Card Connector	F/63012308006	P HA+BH or BGA ⇒3
CN903	Connector MircoSD Flash Memory Card	F/620K0018008	P HA+BH or BGA ⇒4
CN1001	Micro USB holder	F/440GUL4020A	S HA+BH ⇒5
CN1002	CONNECTOR USB-Black	F/620B0019005	S HA+BH or BGA ⇒5
MIC102	Microphone,300ohm,115dB.	F/750041054TZ	S HA+BH or BGA ⇒6
PCON201	Battery Connector	F/620G00E5004	S HA+BH ⇒7
SW1101	Switch Connector,LS12K2H-T,Push	F/6304A020002	P HA+BH ⇒8
WABS1601	Antenna spring,3.2mm*1mm*0.95mm	F/440GUL35Z0A	S HA+BH ⇒9
WABS1602	Antenna spring,3.2mm*1mm*0.95mm	F/440GUL35Z0A	S HA+BH ⇒9
WADS1601	Antenna spring,3.2mm*1mm*0.95mm	F/440GUL35Z0A	S HA+BH ⇒10
WADS1602	Antenna spring,3.2mm*1mm*0.95mm	F/440GUL35Z0A	S HA+BH ⇒10
WAGS1601	Antenna spring,3.2mm*1mm*0.95mm	F/440GUL35Z0A	S HA+BH ⇒11
WANS1601	Antenna Spring 3.90mm*1.10mm*1.45mm	F/440SF50130A	S HA+BH ⇒12
WANS1602	Antenna Spring 3.90mm*1.10mm*1.45mm	F/440SF50130A	S HA+BH ⇒12
WCN501	RF Connector, 11GHz,4,SMD,0.5dB,-13.79dB.,50Ohm	F/620F00B0004	S HA+BH ⇒13
WCN502	RF Connector, 6GHz,1,SMD,999.99dB	F/620F009J001	S HA+BH ⇒14
WCN1201	RF Connector, 11GHz,4,SMD,0.5dB,-13.79dB.,50Ohm	F/620F00B0004	S HA+BH ⇒15
WCN1301	RF Connector, 11GHz,4,SMD,0.5dB,-13.79dB.,50Ohm	F/620F00B0004	S HA+BH ⇒16



5(10)

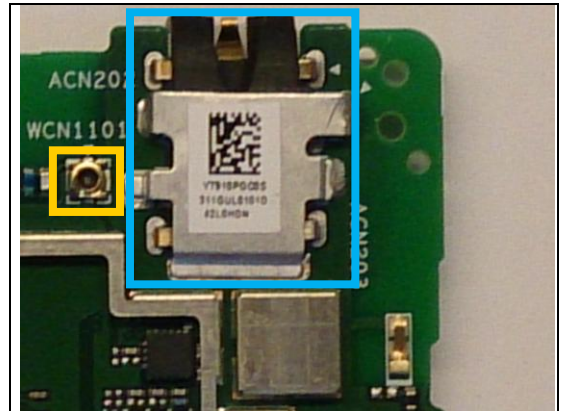
3 Additional Repair info

1

ACN202, ACN203

Replace if mechanical damaged. (No or bad audio in headset)

Protect the RF connector with capton tape!

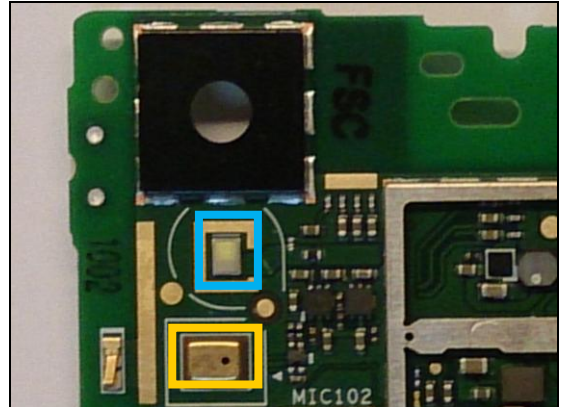


2

CD101

Replace if Flash LED not working

Protect the 2.mic with capton tape!

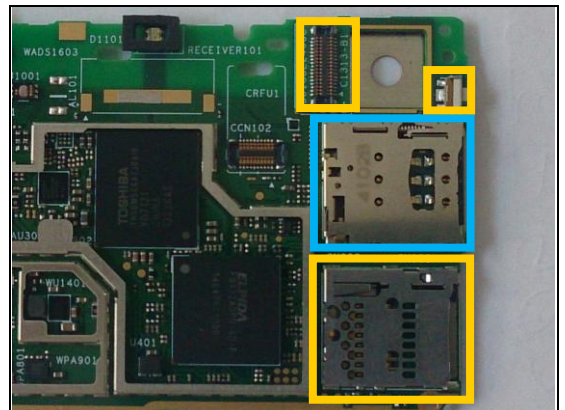


3

CN902

Replace if mechanical damaged. (SIM not inserted)

Protect the BtB, SD connectors and reset switch with capton tape!

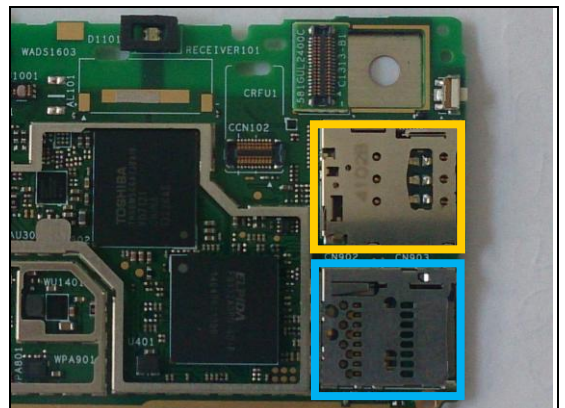


4

CN903

Replace if mechanical damaged. (No SD card inserted)

Protect the SIM connectors with capton tape!



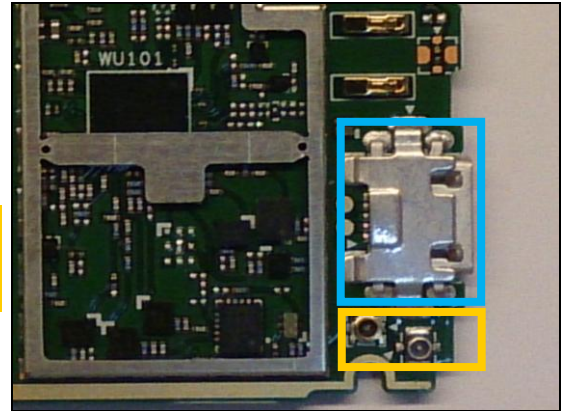
Repair Actions: Additional Repair Info

5

CN1001, CN1002

Replace if mechanical damaged (USB charger or data transfer not working)

Protect the RF connectors with capton tape!

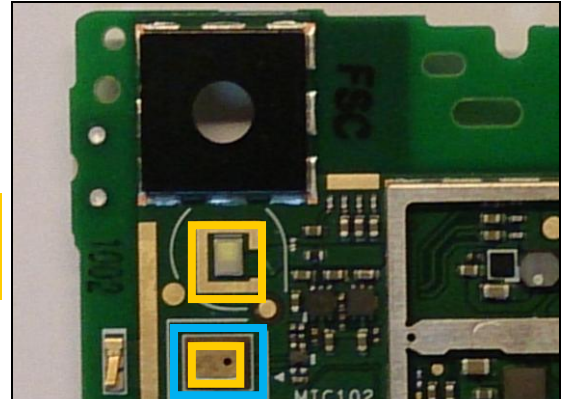


6

MIC102

Replace if no audio from secondary mic

When replacing protect microphone hole and Flash LED with capton tape!

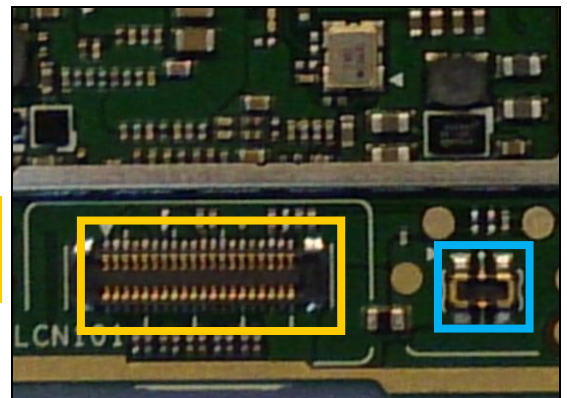


7

PCON201

Replace if mechanical damaged (Phone dead or power off)

Protect the BtB connector with capton tape!

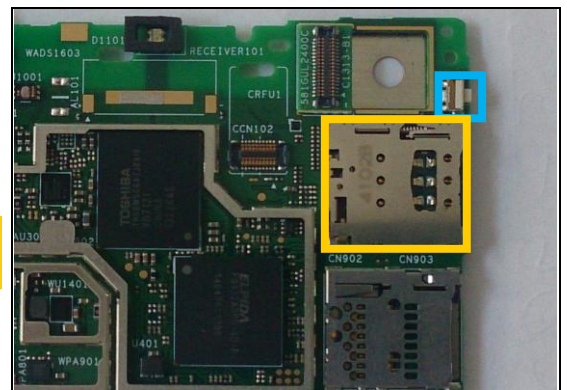


8

SW1101, SW1102

Replace if mechanical damaged (Reset problem)

Protect the SIM connector with capton tape!

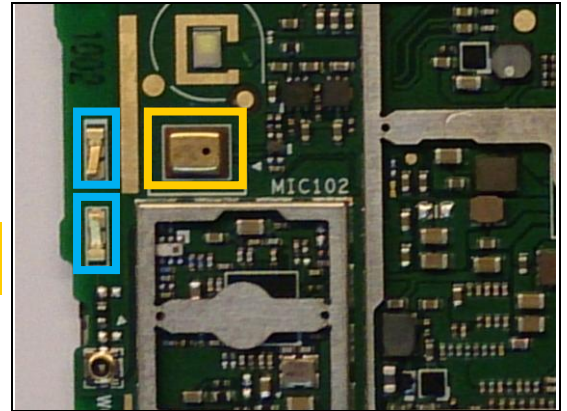


Repair Actions: Additional Repair Info

9

WABS1601, WABS1602

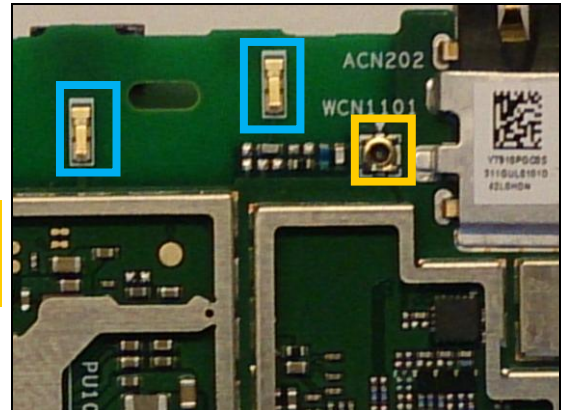
*Replace if mechanical damaged (no or bad WLAN/ BT)
Protect the 2.mic with capton tape!*



10

WADS1601, WADS1602

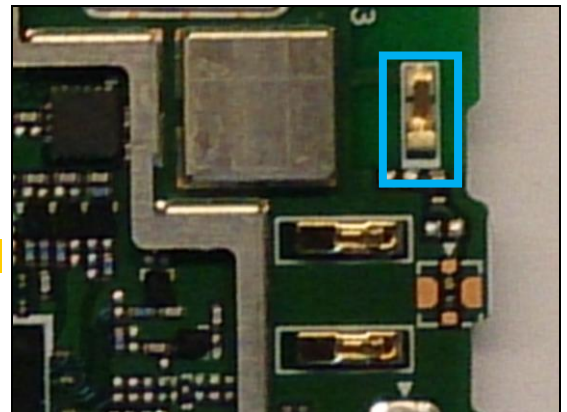
*Replace if mechanical damaged (bad network,
secondary antenna)
Protect the RF connector with capton tape!*



11

WAGS1601

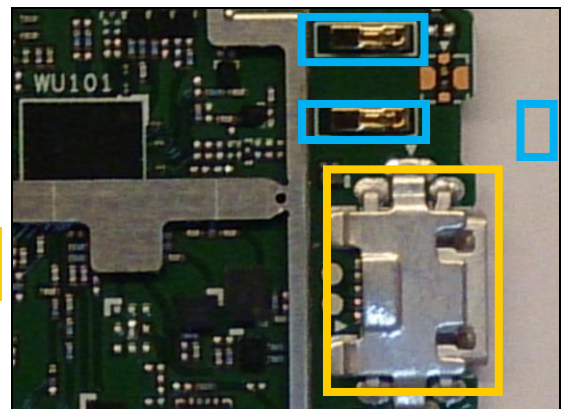
Replace if mechanical damaged (No or bad GPS)



12

WANS1601, WANS1602

*Replace if mechanical damaged (no or bad NFC)
Protect the USB connector with capton tape!*



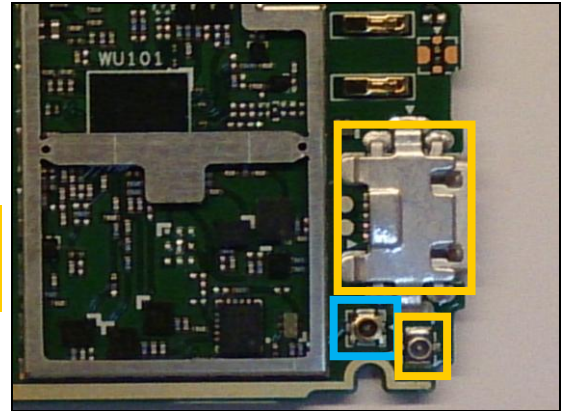
Repair Actions: Additional Repair Info

13

WCN501

Replace if open circuit 1-2 (No or bad network, main antenna)

Protect the USB and RF connectors with capton tape!

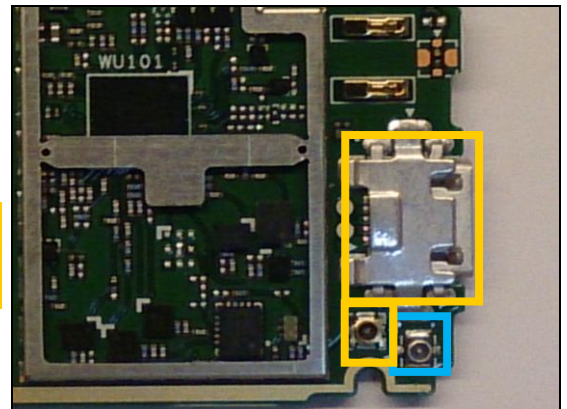


14

WCN502

Replace if mechanical damaged (No or bad network, main antenna)

Protect the USB and RF connectors with capton tape!

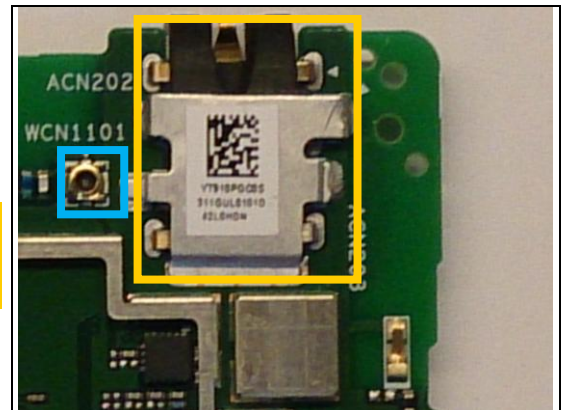


15

WCN1101, WCN1201

Replace if open circuit 1-2 (bad network, secondary antenna)

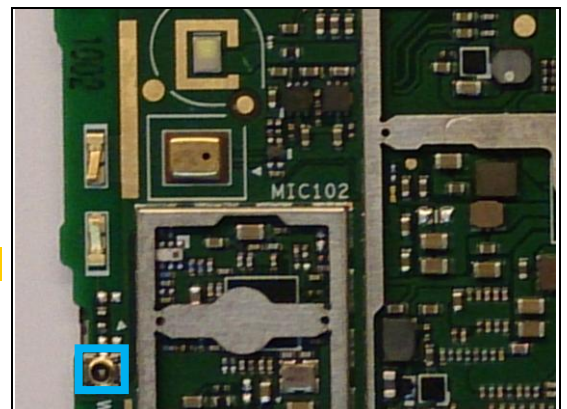
Protect the Audio connector with capton tape!



16

WCN1301

Replace if open circuit 1-2 (no or bad WLAN/ BT)



4 Revision History

Rev.	Date	Changes / Comments
1	2014-08-18	Initial release